

FEATURES

- DC-40GHz, up to 10kW
- Flatness Attenuation Value and Accuracy
- High Reliability, Repeatable Performance
- Anti-pulse and Anti-burnout
- Low IM3 Versions Available

APPLICATIONS

- Military & Space
- Radar&Electronic warfare
- Test Equipment



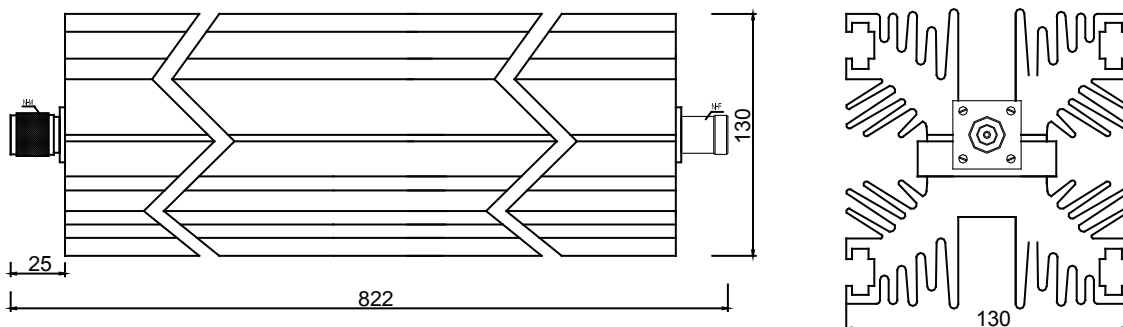
ELECTRICAL SPECIFICATIONS@25°C:

Frequency Range(GHz)	Attenuation Value & Accuracy (dB)	Max VSWR
	50	
DC-2	±1.8	1.35
DC-4	±1.8	1.35
DC-6	±2	1.35

MECHANICAL SPECIFICATIONS:

Parameter	Value	Limits	Units
Dimensions	822*130*130		Millimeter
Weight	15.1	type	Kg
Operating Temperature	-55~+125		°C
Impedance	50		ohms

OUTLINE DRAWING(mm):



Note:

- 1.Average power:1000W @25°C ,100W @ 125°C.
- 2.Peak power:5KW (5μs pulse width with 5% duty cycle)
- 3.Connector type: N,7/16, please remark connector type.Standard is N-M input ,N-F output.
- 4.Customized special attenuation value & accuracy is also available.