

FEATURES

- DC-40GHz, up to 50kW
- High Reliability, Repeatable Performance
- Anti-pulse and Anti-burnout
- Low IM3 Versions Available

APPLICATIONS

- Military & Space
- Radar&Electronic warfare
- Test Equipment



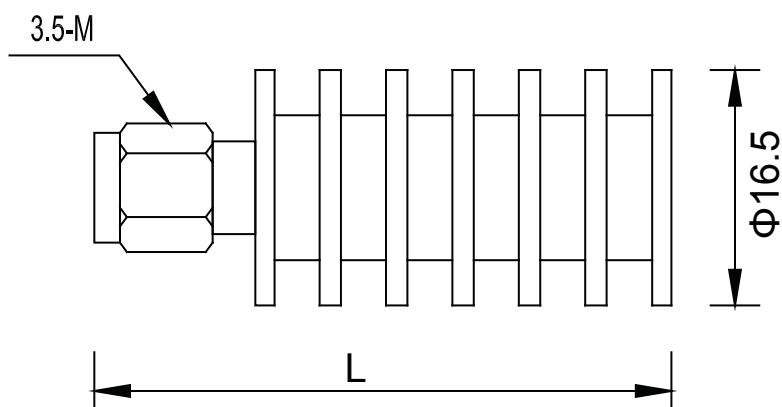
ELECTRICAL SPECIFICATIONS@25°C:

Frequency Range(GHz)	Max VSWR
DC-18	1.15
DC-26.5	1.25

MECHANICAL SPECIFICATIONS:

Parameter	Value	Limits	Units
Dimensions	$\Phi 16.5 \times L(3.5(M):L=41/3.5(F):L=40.2)$		millimeter
Weight	15	type	gram
Operating Temperature	-55~+125		°C
Impedance	50		ohms

OUTLINE DRAWING(mm):



Note:

- 1.Average power:10W @ 25°C , 2W @ 125°C.
- 2.Peak power:1KW (5μs pulse width with 0.5% duty cycle)
- 3.Connector type:3.5mm male or female,please remark connector type when order.
- 4.Customized specification is also available.