

### FEATURES

- DC-40GHz, up to 50kW
- High Reliability, Repeatable Performance
- Anti-pulse and Anti-burnout
- Low IM3 Versions Available

### APPLICATIONS

- Military & Space
- Radar&Electronic warfare
- Test Equipment

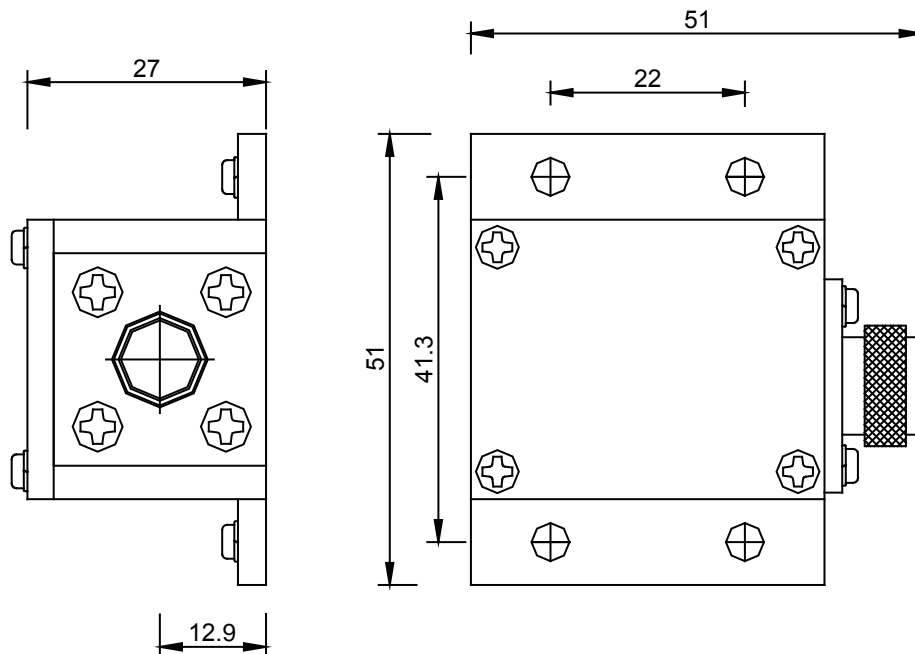
### ELECTRICAL SPECIFICATIONS@25°C:

Part Number	Frequency Range(GHz)	Max VSWR
MCT010H150L	DC-1	1.15
MCT020H150L	1 - 2	1.40

### MECHANICAL SPECIFICATIONS:

Parameter	Value	Limits	Units
Dimensions	51*51*27		millimeter
Weight	50	type	gram
Operating Temperature	-55~+125		°C
Impedance	50		ohms

### OUTLINE DRAWING(mm):



### Note:

- 1.Average power:150W @ 25°C, 15W @ 125°C.
- 2.Peak power: 1KW (5μs pulse width with 15% duty cycle).
- 6.Connector type: N,SMA(M), please remark connector type when order standard part is N.
- 7.Customized specification is also available.